



# Conformal High Temperature Antenna



Maritime



Aerospace



Ground

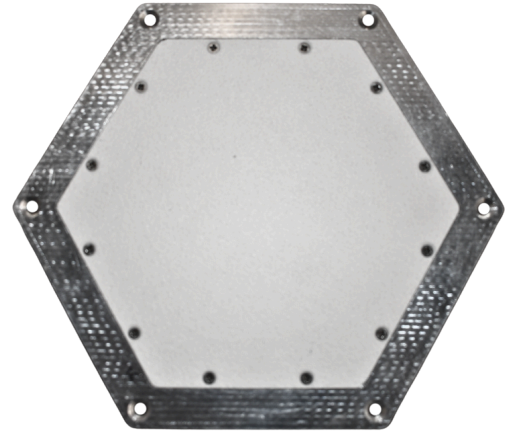


3310 Carlins Park Drive  
Baltimore, MD 21215 USA

(410)-542-1700  
[www.Meggitt-Baltimore.com](http://www.Meggitt-Baltimore.com)

# Conformal High Temp. FTS Antenna

Parker Meggitt has designed several new integrated antenna/radome assemblies capable of sustained 700°F operation. Parker Meggitt can incorporate either a solid laminate ceramic matrix composite radome or a broad band sandwich radome as needed for the application. These radomes are capable of continuous use up to 2400°F (1300°C).



## Key Features and Specifications:

Includes Integral Radome	Max VSWR <2:1
Broad Field-of-View	Optimum Gain Performance
Frequency	400 - 450 MHz and 5.4 - 5.9 GHz
Power (watts)	10
Gain (dBi)	3 dBi
VSWR (max)	2:1
Polarization	Linear
Connector	SMA-F
Size (in.)	1.5 x 6 x 6
Weight (lbs.)	<1 lb.