



# Conformal High Temperature Antenna



Maritime



Aerospace



Ground



3310 Carlins Park Drive  
Baltimore, MD 21215 USA

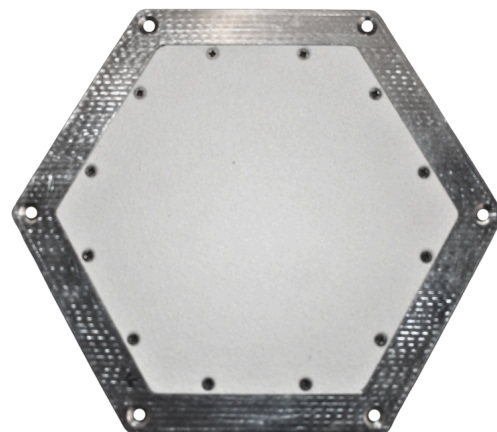
(410)-542-1700  
[www.Meggitt-Baltimore.com](http://www.Meggitt-Baltimore.com)

# Conformal High Temp. ADS-B Antenna

Parker Meggitt has designed several new integrated antenna/radome assemblies capable of sustained 700°F operation.

Parker Meggitt can incorporate either a solid laminate ceramic matrix composite radome or a broad band sandwich radome as needed for the application.

These radomes are capable of continuous use up to 2400°F (1300°C).



## Key Features and Specifications:

Includes Integral Radome	Max VSWR <2:1
Broad Field-of-View	Optimum Gain Performance

Frequency	1.03 - 1.09 GHz
Power (watts)	10
Gain (dBi)	2 dBi
VSWR (max)	2:1
Polarization	Linear
Connector	SMA-F
Size (in.)	1.5 x 4 x 4
Weight (lbs.)	<1 lb.